



The Office of Experiential Learning & Community Engagement supports programs that empower CSB/SJU students to integrate and apply knowledge and theory gained in the classroom setting to a hands on learning environment, such that a deeper understanding is gained and demonstrated through clear learning outcomes. The office brings together students, faculty members, businesses, non-profit organizations and government partners to promote access to mutually beneficial partnerships through experiential learning opportunities.

#### In This Issue:

- ◆ **Page 2: New ELCE Team Members; GSDC Feature Intern**
- ◆ **Page 3: 2015 Jackson Fellows Cohort**
- ◆ **Page 4: 2015 Jackson Fellows Cohort (Cont.); Community Kitchen Update**
- ◆ **Page 5: Scholarship and Creativity Day; Bonners Give Back**
- ◆ **Page 6: National Conference for Undergraduate Research**
- ◆ **Page 7: Creative Volunteering; New ELCE Director**

# Experiential Learning & Community Engagement

Spring 2015: Volume 13, Issue 1

## Summer 2015 Student-Faculty Collaborative Grant Awards Announced

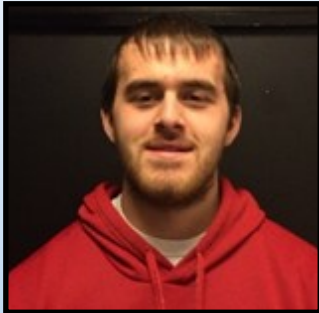
Congratulations to the following faculty member's whose projects were selected this year to receive support through the Undergraduate Research Program!

- ◆ **Catherine Bohn-Gettler (EDUC):** Improving Comprehension: The Intersection between Standards of Coherence and Emotion
- ◆ **Md Fazal (CHEM):** Spectroscopic Investigations of Nanodiamonds (NDs) and Human Hemoglobin Interactions
- ◆ **Jennifer Galovich (MATH):** Patterns in Permutations -- Mahonian Pairs
- ◆ **Sophia Geng (ASIAN STUDIES):** The Evolution of "The Ideal Woman" in 20th Century China
- ◆ **Samuel Johnson (ART):** Inside the Artist's Studio
- ◆ **Sanford Moskowitz (GBUS):** Cybercrime and Business: Strategies for Corporate Global Security
- ◆ **Alicia Peterson (CHEM):** Degradation of Toxic, Carcinogenic, and Bioaccumulative Environmental Pollutants
- ◆ **Annette Raigoza (CHEM):** Mediating Protein Binding Using Gold Nanoparticles with Tailored Surfaces
- ◆ **Christopher Scheitle (SOCI):** Religious Congregations Experiences and Perceptions of Crime and Security
- ◆ **Thomas Sibley (MATH):** Generalizing Cayley Digraphs
- ◆ **Christen Strollo (CHEM):** Transformation of Atmospheric Pollutants and their Effect on Climate
- ◆ **Christina Tourino (ENGL):** Revision of Capstone Research Paper on "Bridesmaids" and Women in Comedy for Publication

**-Article by Nikki Tamm**

## ELCE Welcomes New Student Team Members

The ELCE office is excited to announce even more additions to it's team, including: Andrew Dehn (sophomore), Alyssa Gustafson (junior) and Kanisha Howard (sophomore). We are excited to welcome them and have already recognized the differences they make in our office!



**Andrew Dehn**  
**Mini-Bus Driver**

*"The best part is definitely talking with the people and to know the St. Cloud area... It's nice to be able to bring people to their service for the community."*



**Alyssa Gustafson**  
**Internship Coordinator**

*"I really enjoy finding internships, building resumes, and helping others find out what they enjoy."*

**-Article by Kevin Curwick**



**Kanisha Howard**  
**Mini-Bus Driver**

*"I love the interactions with the students... If I can make the bus an enjoyable place for them, I think they are more likely to come back."*

## Greater St. Cloud Development Corps Internship

This spring, the Greater St. Cloud Development Corporation (GSDC) hosts CSB senior Hannah Klinnert as a Talent Initiatives Intern. GSDC encourages the economic development of the greater St. Cloud area, in part, by finding opportunities for growth and connecting them with talented individuals in the St. Cloud area. As an intern, Hannah promotes JobSpot, an online talent portal (job/internship database). Additionally, she has learned the importance of networking, a large part of this internship experience.

Hannah experiences the Benedictine value of community in her exploration of St. Cloud through the GSDC and JobSpot. Hannah explains that an inspiring part of her internship comes from *"Executives from multiple different businesses, in similar and different areas of development, working together for the betterment of the community."* Her site supervisor, Ms. Gail Cruikshank, also thinks highly of the internship experience, report that having an intern has *"Provided us great support to tackle more initiatives as well as share with [Hannah] a little sneak peek or insight into our work here at GSDC."* Ultimately, this experience has been beneficial for both Hannah and the GSDC!



**-Article by Meg Schrafft**

**Introducing: The 2015 CSB Marie & Robert Jackson Fellows**

**Diana Elhard**

*Major/Minor: Peace Studies & Political Science*

*Fellowship Site: A Refugee Reception and Placement affiliate agency in the Twin Cities*



**Victoria Beach**

*Major/Minor: Psychology/Hispanic Studies*

*Serving site: Early Learning Center of Brookings*

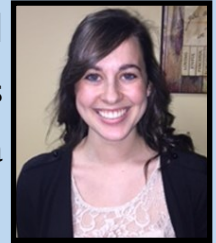


*“Having the opportunity to be a Jackson Fellow is an incredible honor. It means that I get to be further integrated within the community, while enriching it and improving the common good.”*

**Theresa Farrell**

*Major/Minor: Global Business Leadership and Peace Studies*

*Fellowship Site: United Way of Central Minnesota*



**Margaret Ellis**

*Major/Minor: Elementary Education/Theology*

*Fellowship Site: Children’s Museum of South Dakota in Brookings*



**Michelle Hansmann**

*Major/Minor: Sociology/Psychology & Theology*

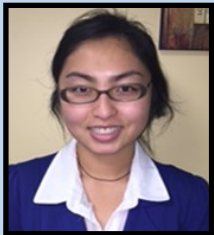
*Internship Site: Catholic Charities in Minneapolis and St. Paul*



**Bao Yang**

*Major/Minor: Nutrition Science.*

*Fellowship Site: Blue Cross Blue Shields of Minnesota*

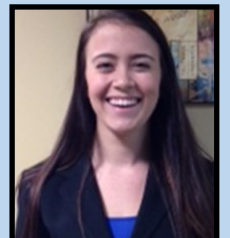


*“To me, being a Jackson Fellow means utilizing all of my resource to help better my community.”*

**Sadie Vahle**

*Major/Minor: Economics/Hispanic Studies*

*Fellowship Site: A nonprofit in the Twin Cities related to economic development*



**-Continued on Page 4**

## Continued: 2015 CSB Marie & Robert Jackson Fellows



### Meg Schraft

*Major/Minor:* Biology/French

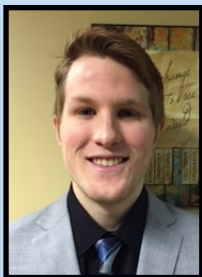
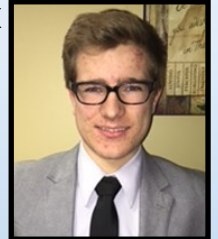
*Fellowship Site:* A pregnancy resource center in St. Cloud.

### Jacob Shawback

*Major/Minor:* Political Science & Hispanic Studies

*Fellowship Site:* An immigration legal advocacy group in the Twin Cities

*“For me, being a Jackson Fellow is a tremendous opportunity to serve my community in a civically engaged way. I view this as an amazing opportunity for both professional and personal growth, as well as a chance to bolster what I have learned in the classroom.”*



### Ian Cochran

*Major/Minor:* Political Science

*Fellowship Site:* The Boys and Girls Club of Brookings

**-Article by Sinloria Macrae**

## Community Kitchen Update

Community Kitchen is kicking off spring semester with a variety of changes. In an effort to grow as a more integrated and sustainable campus program, Community Kitchen is transitioning to a student-run structure. Beginning in August, the program will function under the supervision of a Student Director rather than an AmeriCorps VISTA. Community Kitchen is excited to announce its new Student Director, Bailey Weirens.



*“I’m excited about the learning aspect of the position and to take on more responsibilities, and to foster that excitement in volunteers,”* Weirens said. Weirens is transitioning from her current position as Community Kitchen’s Volunteer Coordinator.

*“I am excited to see students take over this transition and really make Community Kitchen their own,”* Ashley LaLiberte, current AmeriCorps VISTA serving with Community Kitchen, said. *“It really highlights and reflects how much students care and their passion for social justice issues like food insecurity.”*

The congregate dining program shares meals at Casa Guadalupe on Wednesdays and Fridays this semester. Community Kitchen is also partnering with Campus Ministry to deliver meals to The Dream Center in St. Cloud twice a month on Saturdays.

**-Article by Gabby Harvey**

## Scholarship and Creativity Day 2015

The annual Scholarship and Creativity Day celebration is quickly approaching! All students, faculty and staff interesting in presenting their work are reminded about these important due dates in preparation for the event on **April 23, 2015**:

- 3/9** - Student registration opens (9:00 a.m.)
- 4/1** - Student registration closes (11:59 p.m.)
- 4/8** - Project advisor approval closes (11:59 p.m.)
- 4/15** - Department scheduler approval closes (6:00 p.m.)
- 4/17** - On-line searchable schedule available
- 4/23** - Celebration of Scholarship & Creativity Day!

Links to these registration forms can be found using the A-Z Index (Celebrating Scholarship) or with this link: <http://www.csbsju.edu/elce/scholarship-and-creativity-day>

Thank you in advance to all who participate in this wonderful day! ELCE looks forward to sharing in the work and accomplishments of the CSB/SJU community!

**-Article by Allison Fischbach**

## Bonners Give Back



The United Cerebral Palsy (UCP) recently hosted a wonderful event on January 24th, called “Stuck in Motion.” Stuck in Motion, a stationary bike race, engaged individual teams who donated money to participate in the event. The money raised is used by UCP to support individuals and families that face challenges related to living with a disability. Each participating team wore unique costumes and came with energizing attitudes.



While the teams were a vital part of the event, so were its volunteers. Bonner Leaders volunteered, helping each team record their time and providing motivation and a fun atmosphere. While UCP’s “Stuck in Motion Event” raised \$27,500 for individuals and families with disabilities, it also helped raise awareness about Cerebral Palsy and ignited a spark for change in the lives of numerous

people living with disabilities. Of the day, Carl Newbanks, Program Director said, *“Together we can defy the odds, change systems and help all people with physical and silent disabilities live life without limits.”*

**-Article by Sinloria Macrae**

## National Conference for Undergraduate Research

The College of St. Benedict and St. John's University will send ten students with Professors Linda Tennison, Psychology, and Kristina Timmerman, Biology, to the National Conference for Undergraduate Research (NCUR) in Spokane, Washington this year. The conference is held at Eastern Washington University from April 16<sup>th</sup>-18<sup>th</sup>. Students will present their research through oral, poster presentation sessions. Congratulations to all of student participants for their hard work and accomplishments!

-Article by Allison Fischbach

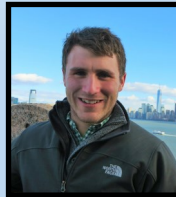
### *An Organizational Analysis of a Residential Healthcare Facility through Prescriptive and Descriptive Approaches*



Lillia Khelif



Laura Fox



Brennan Hall



Elizabeth Roering



Shelby Groen

### *The Effect of Water Depth on Sea Urchin Abundance and Variety of Species in Loberia Bay, Isla San Cristóbal, Galápagos Islands, Ecuador*



Micayla  
Westendorf



Siri  
Berg-Moberg



Emily Hodorff

### *What is the general understanding of dietary iodine and the adequacy of iodine concentration in household iodized salt in rural and urban Jalisco, Mexico?*



Andrea  
Guajardo

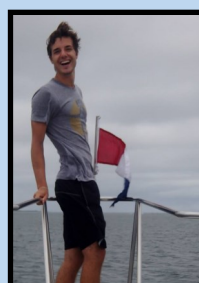
### *Kidney Function of Ictidomys tridecemlineatus During Diuresis and Antidiuresis*



Ryan O'Gara

Connor Piechota

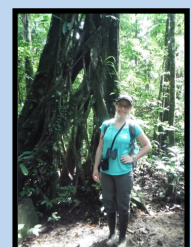
### *Galápagos Sea Lion Behavior Differences in Relation to Human Exposure*



### *White-and Yellow-Tailed Damsel Fish and their Effect on Algal Biodiversity*



Robert  
McCarthy



Brooke  
Piepenburg

## New ELCE Director

ELCE is pleased to announce that Angie Schmidt Whitney will serve as the new Director of the Office of Experiential Learning and Community Engagement beginning March 2. Angie holds a Bachelor of Arts degree in Mathematics from CSB and a Masters of Arts degree in Counseling and Student Personnel Psychology from the University of Minnesota. She comes to CSB/SJU from the University of Minnesota, where she is currently a Senior Career Counselor. Please help ELCE welcome Angie Schmidt Whitney to our community and watch for a more detailed introduction in an upcoming, Spring 2015 newsletter.

-Article by Alyssa Gustafson

## Organizational Communications: Creative Volunteering

Fashion shows and volunteer appreciation brunches are often not what people think of when it comes to a college Communications course. However, for Professor Karyl Daughters and her Communications 367 class this past fall., it is. With the coordination of St. Benedict Senior Community's (SBSC) volunteer coordinator, JoEllen Johnson, Daughters and her nine students organized, planned, and executed two events with SBSC: the annual volunteer appreciation brunch and a 1960's themed fashion show.

The benefits of this type of experiential learning are immense. Professor Daughters states that *"the work in these projects allow the students to become members of the organization and experience first-hand the complexities of communication in a large organization."* She also notes that *"This partnership allows the entire class to share in the collective experience of joining an organization and completing projects within that organization. To say that the reflection on these experiences allows for richer understanding of organizational communication theory and practice would be an understatement. It takes us far beyond what we can accomplish in the classroom."*



From a student's perspective, the benefits are just as meaningful. Andrea Betts, senior Global Business Leadership major and Organizational Communication student this fall, described planning a volunteer recognition brunch for SBSC as *"an incredible experience integrating the real world with the theoretical material being learned in the classroom,"* Betts went on to say that her experience, *"helped build community for CSBSJU students and SBSC staff and residents,"* and *"lit a spark for what it really means to be a part of an organization doing important work!"*

-Article by Claire Cunningham & Christine Palmer